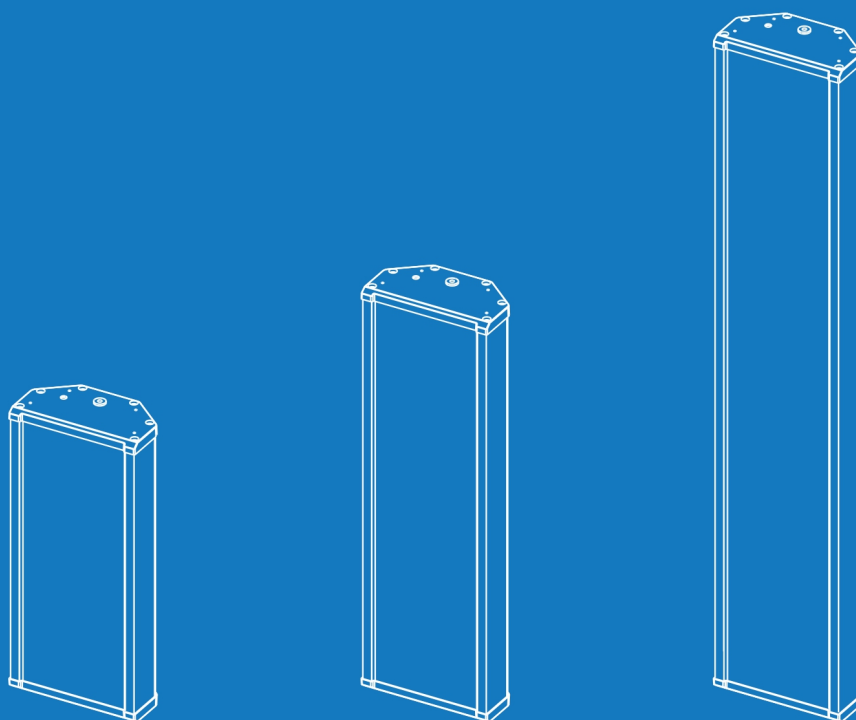


SPON

SIP COLUMN SPEAKER

User Manual



Catalog

Product introduction.....	2
Hardware interface introduction.....	2
Supplementary Information.....	3
Packing list.....	3
User-defined web page settings.....	4
Login web interface.....	4
System Tools.....	4
Protocols.....	5
Network Parameters.....	6
Sip parameters (When choosing SIP protocol)	6
Server parameters (NAS protocol).....	7
Audio parameters.....	8
Priority of local task.....	9
Password modification.....	9
Language settings.....	10
Upgrade the firmware (Note: please do not upgrade the firmware without any special needs).....	10
Reset to Defaults.....	11
Restart device.....	11
System log.....	12
Basic functions.....	12
Receive Broadcast.....	12
Support receive broadcast initiating by server or other terminals.....	12
Offline Broadcast.....	12
Receive Monitor.....	13
Fault Exclude.....	14
Copyright Announcement.....	15

Summary

Safety precautions

- Please abide by the warning and the relevant safety tips.
- Please take this manual in convenient place for future reference.

Warning and Reminding



This symbol means there are potential safety issues, it may cause death or serious injury when incorrectly operating.



This symbol draws the attention to important operation and maintenance instructions.

Settings and Installation

- Avoid making the device wet.
- Do not expose the device to rain or water or other humid environment, as it may lead to fire or an electric shock.
- Do not use other power voltages than indicated on the power supply adapter.
- Use the device only with the indicated voltage to connect it.
- It may lead to fire or electric shock if using higher voltage.
- Do not damage, cut or twist the power cord.
- Keep the power cable away from any heating objects and do not put heavy things on it, as it may lead to fire or electric shock.

Using the intercom

Please shut off the power supply immediately when the following phenomena happen. Please contact the supplier. It may cause fire

or electric shock when continuing to use it.

- When the device is smoking or smelling strange.
 - When water or other things entered in the device.
 - When the device fell or the device housing is damaged.
 - When the power cord is damaged (copper wire is exposed or broken etc.).
 - When the device is in a faulty state (cannot connect to the network, there is no sound etc.).
 - Do not open or modify the device
 - Don't let other things enter into the device
 - Don't let metal items or inflammable objects enter the device, as this might result in fire or electric shock.
 - Do not touch the device when lightning storms are active
 - Do not put any liquid containers or metal objects on the device. If the container fell and liquids penetrated the device, this may lead to fire or electric shock.
 - The device contains parts under high voltage. Opening the cover or modifying the device may lead to fire or cause shock.
- All maintenance and modifications to the device should be done by a qualified professional.

When not using the device for a longer period:

- Please shut down the power and pull out the power adapter when doing maintenance or not using the device for longer than 10 days.

Product introduction

SIP Column Speaker is an Ethernet audio converter designed for outdoor public sound distribution .It finds a variety of applications – outdoor park, playground , road ,commercial square ect.

SIP Column Speaker is a standard-SIP-based sound decoder and converter with an amplifier.

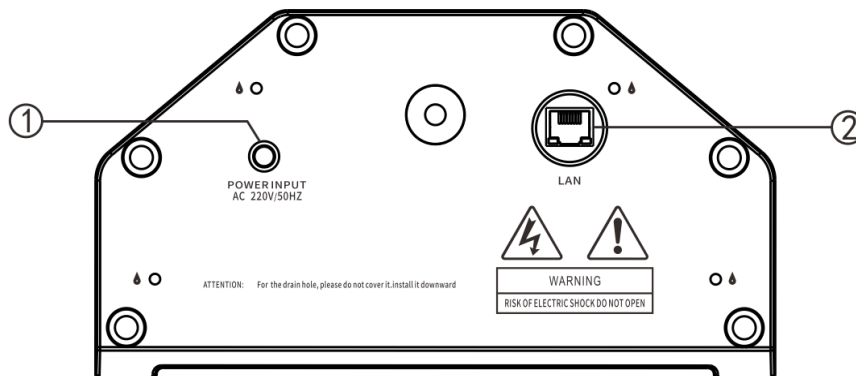
It is equipped with power supply interface , Ethernet interface , having the function of receiving broadcast initiating from IP paging microphone , software or other terminal.



Features

- Providing 30W/60W/120W power supply SIP column speaker
- Using wall-mounted design , integrating network audio decoding ,amplifier and column shell.
- Capable of realizing on-time belling , real-time sound collecting and playing , offline broadcasting task ect function with the use of software.
- Possessing loop-fault-detect function to check the speaker's working status and to display it on the software.
- Realizing personalized configuration through managing the speaker's network parameters, audio parameters, task priority in web page.
- Operable in the Ethernet network and LAN network

Hardware interface introduction



① Power supply interface : AC220V.

② Network interface : plugging network cable and connecting to switch.

Note: ⚠ This icon means weephole , please do not cover or block it.

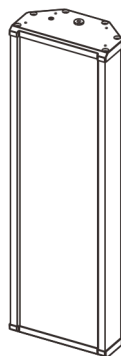
Supplementary Information

Packing list

The SIP Column Speaker includes the following accessories.

Please check following parts. Contact your reseller if any parts are missing.

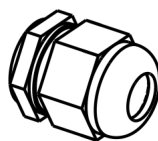
- (1) SIP Column Speaker 1pcs



- (2) L-type installation frame 2pcs



- (3) Waterproof connector 1 set



- (4) Rectangular metal piece 1pcs



- (5) Screws (M8*16) 3 sets



- (6) Nut 1pcs (M8)



- (7) Quick installation manual 1PCS



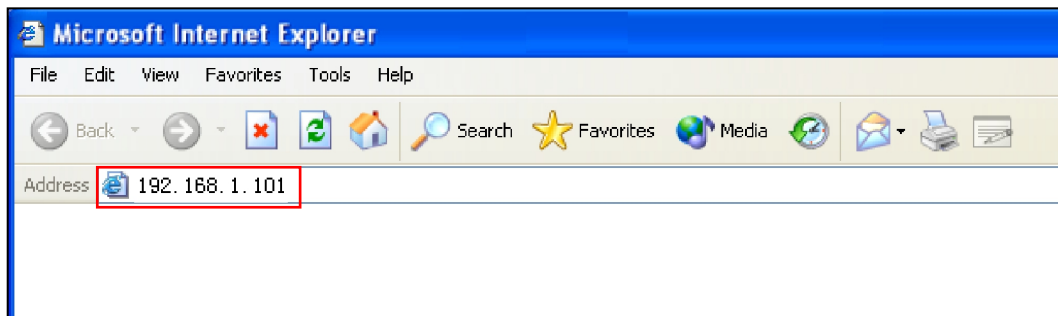
- (8) Certification 1pcs



User-defined web page settings

Login web interface

- (1) Use a web browser and navigate to the IP address of the SIP Column Speaker (factory default is http://192.168.1.101), then press Enter.



- (2) Enter user name and password in the login window of the Web page (the default is : admin, password : admin).



- (2) After pressing Enter, you will arrive in the configuration web page of the SIP Column Speaker. (Note :After saving the parameters in web page , if it doesn't take effect , please clear your browser caches , then re-configuring it)

System Tools

In this window , user can check device 's ID, IP address , subnet mask ect. parameters , simultaneously checking the status of device and task , noise level , real time volume and so on.

Status	
— Basic Settings —	
Net options	
Server options	
Audio options	
Local Task Priority	
— System Tools —	
Password Setting	
Language Setting	
Communication Protocol	
Update firmware	
Factory reset	
Reboot	
System logs	

Status

Terminal ID : 2

Terminal IP : 192.168.4.22

Subnet Mask : 255.255.255.0

Gateway : 192.168.4.1

MAC Address : f4:15:35:02:17:24

Register Status : Unregistered

Task status : Idle

Realtime noise : 41 dB

Average noise : 60 dB

Realtime volume : 0

System time : 2020-7-7 10:09:20

Refresh

Protocols

SIP Column Speaker support SPON NAS Protocol and Standard SIP protocol (the default is SIP protocol) . Please select the protocol correspond to the type of software which device will log in . After saving , please clear the browse cache and restart the browse to let it take effect.(Note : Choosing different protocol will have different options at left side , please subject to real interface)

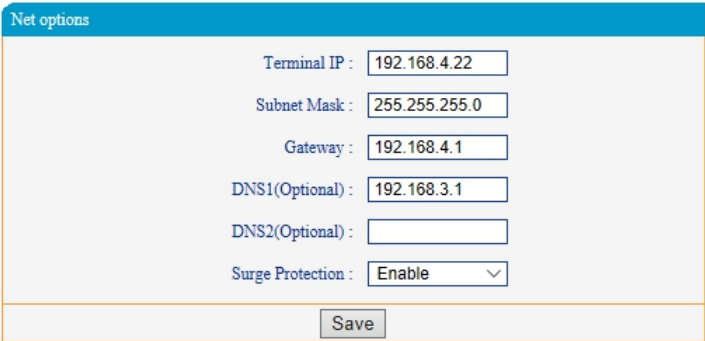
Status	
— Basic Settings —	
Net options	
Server options	
Audio options	
Local Task Priority	
— System Tools —	
Password Setting	
Language Setting	
Communication Protocol	
Update firmware	
Factory reset	
Reboot	
System logs	

Communication Protocol

Protocol Name: NAS

Save

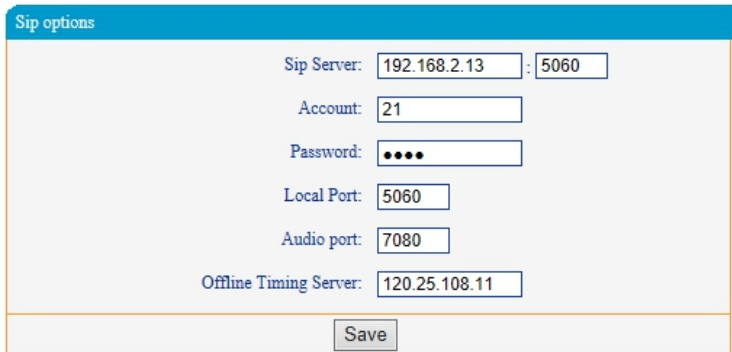
Network Parameters

Status	
— Basic Settings —	
Net options	
Server options	
Audio options	
Local Task Priority	
— System Tools —	
Password Setting	
Language Setting	
Communication Protocol	
Update firmware	
Factory reset	
Reboot	
System logs	

The parameters have the following meanings:

Device IP	Device IP address (the default is 92.168.1.101 and it cannot be repeated against other device)
Subnet mask	The subnet mask of the LAN network
Default gateway	The gateway of the network
Preferred DNS server	IP address of the preferred domain name resolver on the network
Alternate DNS server	IP address of the alternate domain name resolver on the network
Surge Protection	<p>After enabling surge protection , when the speaker is attacked by the surge or static electricity, the speaker will automatically detect them ,letting the network restore to normal automatically.(on the premise of all network parts undamaged)</p> <p>Note : This function can only detect the status of network . It will not deal with the issues when other parts not related network are attacked by the surge or static electricity.</p>

Sip parameters （When choosing SIP protocol）

Status	
— Basic Settings —	
Net options	
Sip options	
Audio options	
Local Task Priority	
— System Tools —	
Password Setting	
Language Setting	
Communication Protocol	
Update firmware	
Factory reset	
Reboot	
System logs	

The parameters have the following meanings:

SIP Server	SIP address of the device, please do not modify the SIP server port if without special needs (The default port is 5060)
Account	SIP account of the device and it cannot be repeated with other device.

Password	The password of device when login SIP server.
Local Port	Please set up local port based on real situation.
Audio Port	Please set up audio port based on real situation.
Offline auto-time-correction server	Please set up the IP address of offline time-correction server. After turning on speaker , when it isn't connecting to the software within 60s to 100s , the speaker will correct time once . In addition , the speaker will correct time every 6 hours when speaker are offline.

Server parameters (NAS protocol)

The parameters have the following meanings:

The device number	Terminal ID, this number identifies SIP column speaker when more than one intercom is in the network. Range 1-999, the factory default is 1.
Local port	The device local port, please do not modify it if without special needs . The factory default is 2046
Preferred server	The IP address of the preferred server for this SIP column speaker, the factory default is 192.168.1.13.
Standby server	When the preferred server is not available, the SIP column speaker will log in to the standby server
Server version	Server version IP. When there are many SIP column speaker in a project . They all set up same server version IP . Once user upload the new Firmware at server version IP address , all the speaker will automatically update after being restarted.
FTP	User can enable or disable FTP function. When enable FTP function, user can use FTP to update the offline tasks automatically. Note: When user use XC software to push offline tasks, then need to close FTP function.
Method of Login	User can log in with username and password , or login directly without inputting any information.
FTP server	IP User can set up FTP server address.

FTP Name, FTP Password	FTP Name: The factory default is admin; FTP Password: The factory default is admin
Request Login Interval time	When the intercom is offline, this timer will define the interval of login requests that are sent to the server.
Terminal time-correcting IP address	Input other terminal 's IP address as a reference. When terminal are offline , terminal will correct the time based on yr referenced terminal if offline time-correction server fails to correct the time, and will correct time every 6 hours (Note: all the terminal should use NAS protocol to log in software)

Audio parameters

The screenshot displays the 'Audio options' configuration page. On the left is a sidebar menu with options: Status, Basic Settings, Net options, Server options, Audio options (highlighted), Local Task Priority, System Tools, Password Setting, Language Setting, Communication Protocol, Update firmware, Factory reset, Reboot, and System logs. The main content area contains the following settings:

- Local Amplification Volume: 9
- Offline Broadcast Volume: 9
- Buffer time: 0
- Audio check: Disable
- Dynamic volume adjust: Disable
- Noise detect adjust(dB): 16
- Noise Reference(dB): 60
- Noise detect interval(s): 30
- Software Amplifiers: Loudness
- Network Adaptabil: Low Band
- Receiver Microphone Radio Volume Tuning: Do not ad
- Wan Audio Buffering: Disable

A 'Save' button is located at the bottom right of the configuration area.

The parameters have the following meanings:

Local sound volume	Finished products do not have line-in interface and this function is reserved.
Offline speaker broadcast volume	Rang from 0-15 Note: when speaker are online , sound volume will be controlled by software
Buffer time	Buffer time means when device receiving network task, the time that the device will delay to broadcast to make sure the sound quality under poor network
Audio Check	Audio check means loop detection function .After enabling the function, the device will play sound through built-in microphone after receiving server tasks. When there are problem like speaker unit fault or cable fault, the device will self-judge the problem and feedback to server.
Dynamic volume adjustment	After enabling it , the SIP column speaker can automatically adjust broadcasting sound volume as per the noise level. For example : when nearby noise sound larger than referenced noise value , and larger than noise detection correction value , the SIP speaker 's real time sound volume will be increased. And vice versa When disable it, no this function.
Noise detection	The default is 16dB.

correction(dB)	Note: Noise detection correction value = the noise value of decibel test machine- Noise reference value (under the premise of setting up noise detection correction value as 0).
Noise reference(dB)	It means the average noise level when under normal environment. The default is 60dB.
Noise detect interval(s)	It means setting the intervals of average noise detection time . The default is 30s. And it changes based on what user set up.
Software Amplifiers	It can set up the quality of digital audio source. It has two choices , one priority of audio quality, another priority of audio loudness. We recommend you to choose the option of priority of audio loudness if requiring higher audio loudness.
Network Adaptability	User can set up the network adaptability . The default is low band. If user choose the option of low band , it can make sure to broadcast complete audio data when receiving network broadcast tasks . But it may occur broadcast delay when under poor network. If user choose the option of proper delay , it can make sure to broadcast real time. But it may occur the situation of discontinuous packet loss when under poor network. Note: We recommend you to choose the option of low band if requiring higher complete audio data. ; And recommending you to choose the option of proper delay if requiring synchronous broadcasting.
Receiver Microphone Radio Volume Tuning	The volume of the receiving microphone broadcast can be properly attenuated (1dB, 2dB, 3dB or 4dB) to avoid sound distortion due to excessive volume. The default is no adjustment.
Wan Audio Buffering	Once enable this function , it can improve the audio sound quality when the network is congested

Priority of local task.

In this window, user can set up the priority of task.

Default priority order :Offline on-time task>IP Broadcasting> Short-circuit input alarm > Line in local sound reinforcement 设

<div> <div>Status</div> <div>— Basic Settings —</div> <div>Net options</div> <div>Server options</div> <div>Audio options</div> <div>Local Task Priority</div> <div>— System Tools —</div> <div>Password Setting</div> <div>Language Setting</div> <div>Communication Protocol</div> <div>Update firmware</div> <div>Factory reset</div> <div>Reboot</div> <div>System logs</div> </div>	<div>Local Task Priority</div> <div> <div>Priority1 : Offline Timing Play Task</div> <div>Priority2 : IP Broadcasts</div> <div>Priority3 : Short Input Alarm Sound</div> <div>Priority4 : Line Input Amplification</div> </div> <div>Save</div>
--	---

Password modification

You can change the web page login-in account and password here, it will be effective after

clicking on “Save”.

Status	<div><h3>Password Setting</h3><p>Original username : <input type="text" value="admin"/></p><p>Original password : <input type="password"/></p><p>New username : <input type="text"/></p><p>New password : <input type="password"/></p><p>Password Confirm : <input type="password"/></p><p><input type="button" value="Save"/> <input type="button" value="Clear"/></p></div>
— Basic Settings —	
Net options	
Server options	
Audio options	
Local Task Priority	
— System Tools —	
Password Setting	
Language Setting	
Communication Protocol	
Update firmware	
Factory reset	
Reboot	
System logs	

Language settings

You can switch the Web page language between Chinese and English, save the modification and restart the speaker to activate the changes.

Status	<div><h3>Language Setting</h3><p>Language : <input type="text" value="English"/></p><p><input type="button" value="Save"/></p></div>
— Basic Settings —	
Net options	
Server options	
Audio options	
Local Task Priority	
— System Tools —	
Password Setting	
Language Setting	
Communication Protocol	
Update firmware	
Factory reset	
Reboot	
System logs	

Upgrade the firmware (Note: please do not upgrade the firmware without any special needs)

Click “System Tools” and “Upgrade Firmware” to enter the firmware upgrade page.(if meeting abnormal web when enter to upgrade mode , please clear all cache of browser , then re-log in to web page.

Status	<div><h3>Update firmware</h3><p>Firmware version : 1.1.1_20200628 Build 513</p><p>Notice: The device is going to enter updating mode in 15 seconds, Keep power on while updating otherwise updating may fail.</p><p><input type="button" value="Update"/></p></div>
— Basic Settings —	
Net options	
Server options	
Audio options	
Local Task Priority	
— System Tools —	
Password Setting	
Language Setting	
Communication Protocol	
Update firmware	
Factory reset	
Reboot	
System logs	

After successfully choosing the right Firmware provided by factory , then click “update” (please note that do not cut off power

of device , it will cause upgrade failed.)

Status	<div>Update firmware</div> <div>Path : <input type="text" value="Select"/></div> <div>Notice: Keep power on while updating otherwise updating may fail, update process will take 30 seconds, the device will automatically reboot when update complete.</div> <div><input type="button" value="Update"/></div>
— System Tools —	
Update firmware	
Reboot	

Then click reboot and back to normal settings.

Reset to Defaults

Reset to defaults: all parameters need to be reset to defaults

Status	<div>Factory reset</div> <div>Restore last correct settings or factory settings when the device fails.</div> <div><input type="button" value="Factory reset"/></div>
— Basic Settings —	
Net options	
Server options	
Audio options	
Local Task Priority	
— System Tools —	
Password Setting	
Language Setting	
Communication Protocol	
Update firmware	
Factory reset	
Reboot	
System logs	

Restart device

Restart the device

Note: the all modified parameters on the web page will be effective after restarting the device.

Status	<div>Reboot</div> <div>Click button to reboot the device.</div> <div><input type="button" value="Reboot"/></div>
— Basic Settings —	
Net options	
Server options	
Audio options	
Local Task Priority	
— System Tools —	
Password Setting	
Language Setting	
Communication Protocol	
Update firmware	
Factory reset	
Reboot	
System logs	

System log

The logfile contains all system events of SIP column speaker.

Status	
— Basic Settings —	
Net options	
Server options	
Audio options	
Local Task Priority	
— System Tools —	
Password Setting	
Language Setting	
Communication Protocol	
Update firmware	
Factory reset	
Reboot	
System logs	

System logs	
Index	Log content
1	Jul 7 10:09:07 Successful application startup
2	Jul 7 10:09:59 Time Sync Successfully,From:NTP Server 120.25.108.11,2020-6-7 10:9:59
1	
Refresh	

Basic functions

Receive Broadcast

Support receive broadcast initiating by server or other terminals.

Offline Broadcast

SIP column speaker supports offline broadcast, when device is offline, terminal can play on-time ring bell task set up by the server. the setting steps of offline broadcast as follows:

- 1) User can add a “On-time Ringing ” task in the schedule task interface .Click icon “Add” to do detailed operations such as setting up executing time and schedule type in Add Trigger interface, or setting up terminal ID and file in Add Operation interface ect.
- 2) After click save, then click push task icon in the left bottom.

Notes: offline broadcast only support MP3 format audio.

Dashboard
Status
Schedule Task
Realtime Task

Scheme list
+ Add
Delete
Copy
Cut
Paste
Show task result
Batch
More

Enable	Task name	State	Trigger	Operati
<input checked="" type="checkbox"/>	11	Idle		[Talk] 1 ->

Add task

Task name: 11
Creator: admin

+ Add trigger
+ Add trigger(Batch)

Trigger	Context	Edit	Delete
Timer	Execute time: 14:30:00 Period: Daily Start date: 2020-01-02		

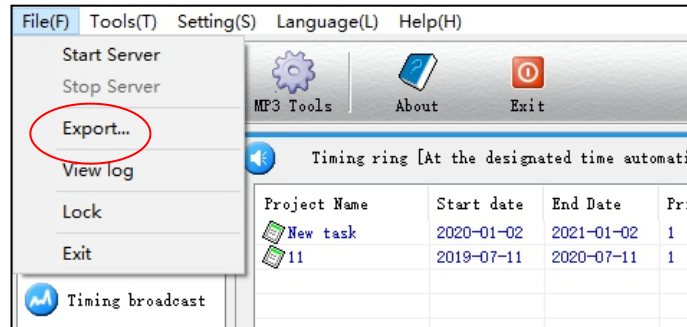
+ Add operation

Operation	Context	Sort	Edit	Delete
PA	Audio source: File Total: 00:04:56 Durations: Play once			

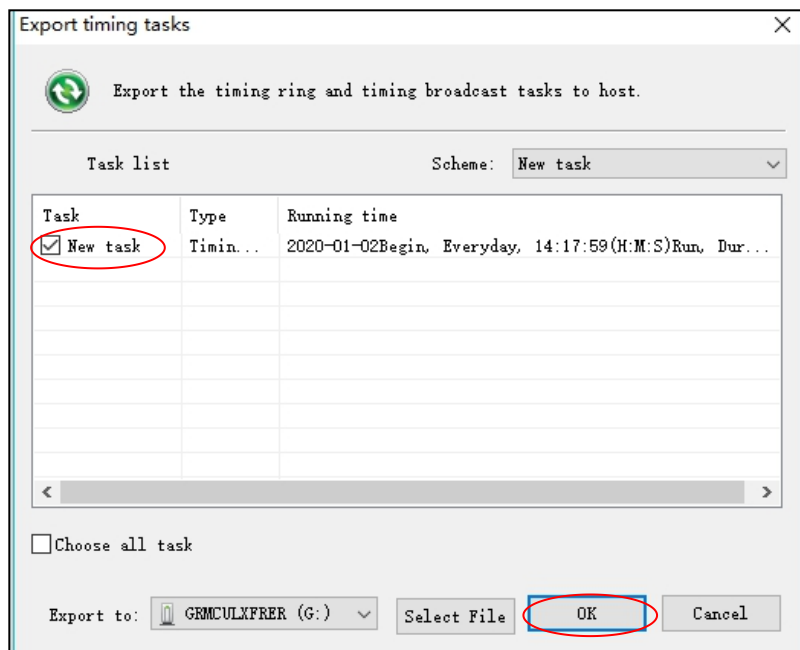
Push task
Save
Cancel

Steps under NAS software

1) Setting “time ring bell” task in the server software (for the specific steps, please refer to server software Operation Manual), and then click [File(F)]-[Export].

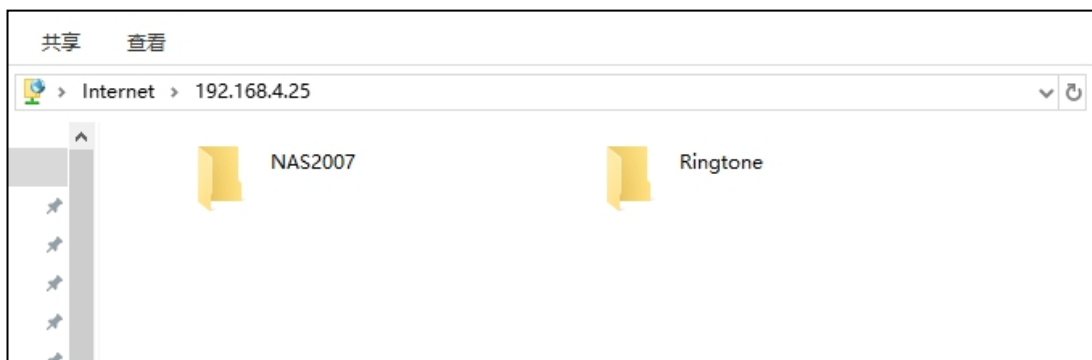


2) Select the task in the “Export timing tasks” list, and then click “OK”, tasks will be exported to specified path.



3) Access to terminal FTP:// terminal IP(the defaults user name and password is admin), put the exporting timing ring bell document to “NAS2007” under FTP (note :If there is no folder named as NAS2007 ,please crease a new one), It will be effective after reboot device.

Notes: offline broadcast only support MP3 format audio.



Receive Monitor

SIP column speaker can receive monitor initiated by other terminals.

Fault Exclude

Terminal can not login to the server?

1. Check the server software and main control computer is normally open or not. It must close all the firewall before open the service software, (including the systemic firewall and other antivirus software).
2. Check the network connection is normally working or not.
3. Check the terminal IP setting. Checking the terminal ID No., server IP, local IP and gateway IP these parameters is correct or not.

No sound when receiving broadcast

1. Check whether the device is online or not
2. Check whether device sound volume in server and in web page to be 0 , if yes , please increase it.

When web show abnormal?

Please clear the caches or change the browser

Copyright Announcement

Copyright

The manual, which is created or developed on the basis of SPON copyright, is the intellectual property of SPON. Without prior written consent by SPON, any reproduction, modification, or retransmission, in any form or by any means, is illegal and strictly prohibited.

In accordance with relevant laws, translation and conversion are contained in reproduction.

Only for private use, downloading and printing of the manual is not prohibited when it is spreading on internet and media.

No part of the manual is allowed to be reproduced or used for commercial purpose. And SPON shall take no responsibility for any losses or damages caused by the illegal reproduction and conversion of the manual.

Warranty

The manual is subject to modification, and there is no further notice if it is modified. Accurate statement, information and suggestion are provided in the manual to the best. But any expression or implication are not guaranteed by SPON, and users bear full responsibility for the application of product.

SPON made no guarantee about the manual, including but not limited to any contained marketability or specific guarantees. SPON bears no responsibility for any indirect or incidental losses caused by improper use of the manual.



Wechat

SPON Communication Technology Co., Ltd.
www.spon.com.cn
Service Hotline: +86-400-823-2588
Reserve the amendment right without notice

